

Every White Sandian, a success story

**School Leader's
Sharing**

**P3 School-Parents
Engagement &
Communication
Session
(SPECS)**

2 February 2024



Our School Leaders

Growth Mindset @ WSPS



**Ms Audrey Wong
Principal**



**Ms Rezina Khan
Vice-Principal**



**Ms Lina Tiong
Vice-Principal
(Admin)**



Every White Sandian, a success story

Broad shifts in Singapore's education system

Every White Sandian, a success story

Broad shifts in Singapore's Education System

THE PSLE CHANGES ARE PART OF A BIGGER STORY

Over the years, we have been fine-tuning the education system to help our students discover and develop their strengths and interests, while moving away from an over-emphasis on academic results.

Our PSLE scoring changes aim to:

- Reduce fine differentiation at a young age
- Recognise students' level of achievement, regardless of how their peers have done



Moving away from an over-emphasis on academic results, focusing on a child's holistic development.

Adjusting School-based Assessment Structures

P1

> No examination, but weighted assessments are conducted throughout the year

P2

> Weighted assessments throughout the year and year-end exam

P3-P6

> Mid-Year Exam (MYE) and year-end exam, in addition to weighted assessments throughout the year

Secondary level

> Most schools conduct Mid-Year Exam (MYE) and year-end exam, in addition to other weighted assessments throughout the year

P1 & P2

> Removal of all weighted assessments (including P2 year-end exam)

S1

> Removal of Mid-Year Exam (MYE)

From P3 to S4/5

> Schools to conduct no more than one weighted assessment per subject, per school term. This is in addition to Mid-Year Exam (MYE) and year-end exam at levels where this is applicable

P3, P5, S3

> Removal of Mid-Year Exam (MYE)



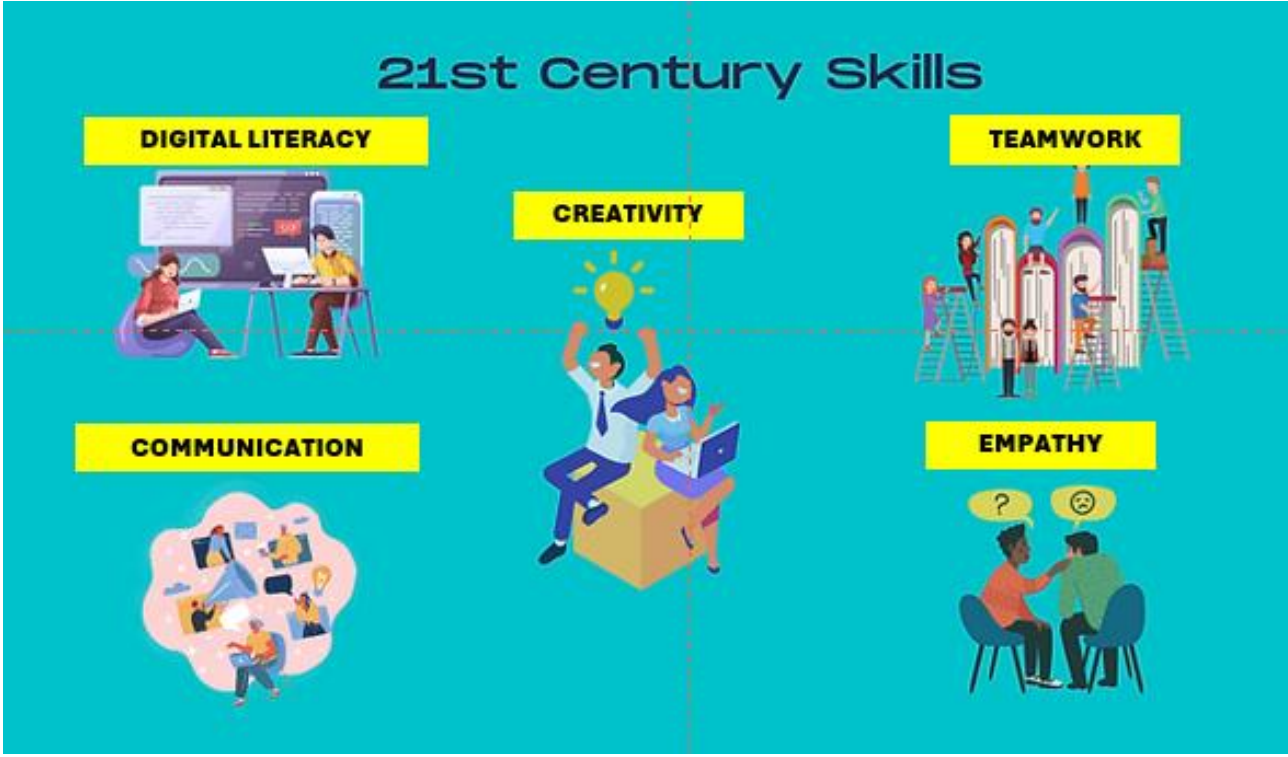
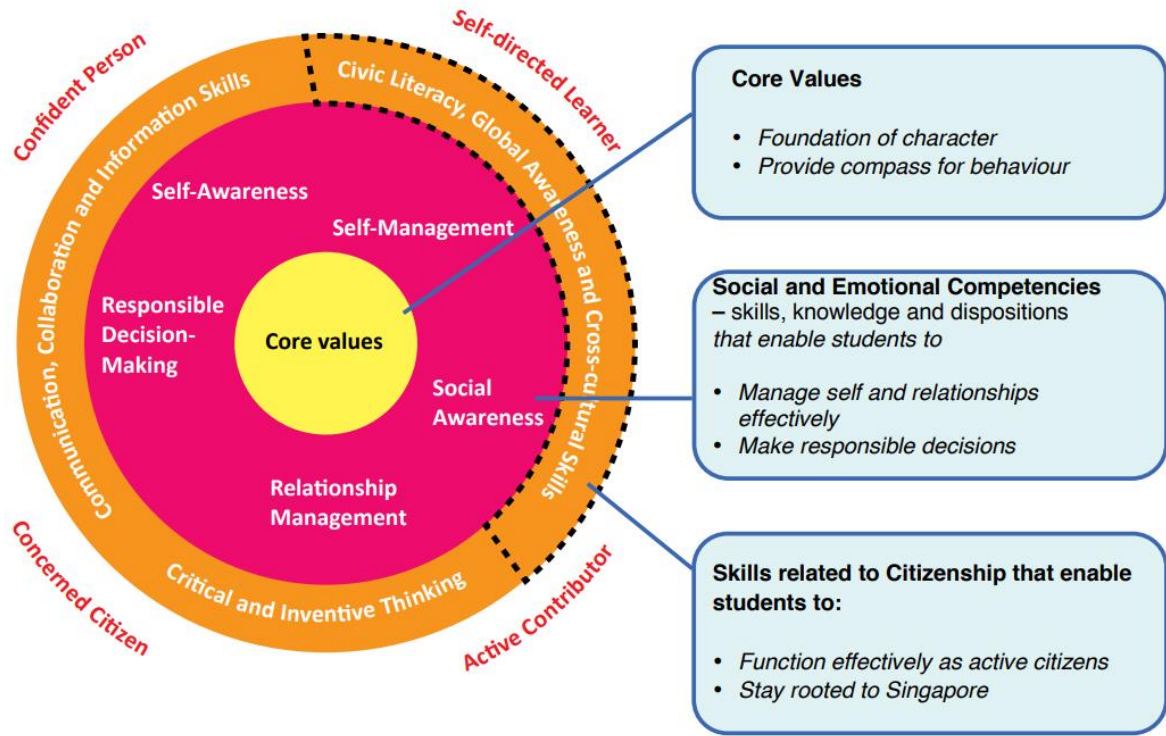
Adjusted school-based assessment structures provide autonomy for schools to provide opportunities for student-initiated learning

Every White Sandian, a success story



Broad shifts in Singapore's Education System

MOE's framework for 21st Century Competencies and Student Outcomes



Broad shifts in Singapore's Education System

Growth Mindset @ WSPS 

Refreshing our Curriculum Character and Citizenship Education 2021 (CCE 2021)

1

Making CCE more relevant and applicable

- CCE will be further integrated into lessons and activities, such as CCAs, camps and outdoor activities.
- Students will go through key student development experiences beyond the classroom from primary to pre-university, including new cohort Learning Journeys.

2

Strengthening mental health and cyber wellness education

- Students will be explicitly taught about mental health. Time spent on discussion on cyber wellness issues will be increased by 50%, on average.
- All schools will establish a peer support structure by 2022.

3

Greater emphasis on teaching of moral values in primary schools

- Students will be taught moral values through cultural stories, songs, idioms and proverbs unique to each Mother Tongue Language.
- Form Teacher Guidance Period will be broadened to include topics related to National Education and citizenship, which are better taught in a multi-cultural setting.

Growing need to increase awareness of mental health matters while developing greater resilience in students

Every White Sandian, a success story



Broad shifts in Singapore's Education System

Growth Mindset @ WSPS 

Initiatives announced in 2023

1 Every Student a Creator, Connector and Contributor

- Enhanced 21CC Framework and Priority Emerging 21CC (E21CC)

2 EdTech as a Capability Multiplier

- "Transforming Education through Technology" Masterplan 2030
- Strengthening Student Cyber Wellness

Enablers

Schools can decide when to implement and which enablers to tap on.



From the School as our World, to the World as our School



- School White Area and Canteen Grant
- Additional funding for flexible furniture
- Establishment of Partnerships Engagement Office



Staff Capacity & Capabilities

- Teacher Growth Model (2024)



Every White Sandian, a success story



WSPS alignment to education shift

Every White Sandian, a success story



WSPS alignment to education shift

Growth Mindset @ WSPS



Instilling the right values and developing good character in White Sandians

Learning effective self-management strategies

SELF-CONTROL

- I start on my task quickly and stay focused throughout.
- I organize my things neatly.
- I follow rules and routines well.
- I manage my time well.
- I resist the temptation to eat too much fast food as it is not good for my health.



Responsibility for daily learning
(Use of Student Handbook and
Daily Homework File)

Every White Sandian, a success story



WSPS alignment to education shift

Learning to collaborate respectfully with peers through effective communication

WE ALL HAVE A PART IN MAKING THE CLASS A KIND AND CARING PLACE.



EVERYONE HAS STRENGTHS TO CONTRIBUTE.
WHAT IS YOURS?



Every White Sandian, a success story



WSPS alignment to education shift

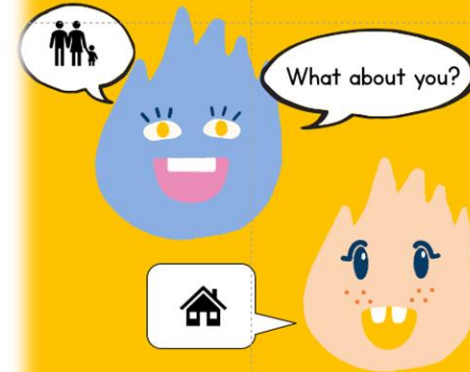
Developing passionate learners with exemplary character

Instilling positive routines for students to develop good habit of respectful behaviour and responsible care for environment

G.E.A.R. - Setting the tone for a positive experience
U.P. – Useful Practices to set the routine for learning

1. **G**reet
2. **E**nvironment: **E**veryday **R**esponsibility
3. **A**ttendance, **A**ttire check & **A**ttention
4. **R**eview & **R**eject on Learning

3. I HOPE WE WILL RESPECT ONE ANOTHER.



I will remember to use respectful language when talking to my friends online and offline.

I will take turns to speak in a group discussion.

I will try to understand my friend's opinion first before getting angry.

Clear and explicit learning of positive behaviour expected of White Sandians

Every White Sandian, a success story



WSPS alignment to education shift

Growth Mindset @ WSPS 

Providing a caring and enabling environment for joyful learning

Play Pedagogy



**First Days Of School
- Fostering positive Teacher-Student Relationships & Peer Relationships**

Every White Sandian, a success story



WSPS alignment to education shift

Growth Mindset @ WSPS 

Enhancing students' resilience in support of their well-being

What are you worried about as you start the new year?
[Choose as many as you like.]

- Difficulty making new friends
- Not getting along well with friends
- Learning new subjects/skills
- Too much schoolwork
- Not meeting my own expectations
- High expectations from parents/teachers
- Quarrels at home
- Money issues at home
- I am not worried about anything



You are not alone! Please talk to your parents and teachers if you need to speak to someone.

Praise and affirmation as a strategy to develop students' Growth Mindset

Termly Check-in Surveys



Heart-to-heart Conversations



Every White Sandian, a success story



Home-school Partnership

Every White Sandian, a success story

Home-school partnership

IT TAKES A VILLAGE

MOE to partner parents as they seek to strengthen relationships with their children

Support our **Parent Support Groups** to work closely with schools



Character: good qualities of a person

Moral Character
Be a good person!

Fair Love
Courage Empathy
Perseverance
Compassion
Respect Integrity
Trustworthy

Performance Character
Try your best at school!

Scholarship Integrity
Leadership Community
Dignity Peace
Perseverance
Responsibility
Social Justice

Civic Character
Be a good citizen!

Volunteer
Make a difference!
Do the right thing
Give back!
Take care of the environment
Help others!
Do your part!

Home-school partnership

Supporting your child for success

Growth Mindset @ WSPS



Build
Competence

Conflict Resolution

But why?

Why not?

Agree on the root cause of the problem.
Take turns to offer solutions.
Decide on a solution together.

When you work towards a win-win solution
together, you restore and strengthen
relationships with others.



Building Positive
Relationships



Every White Sandian, a success story

Common challenges faced by Middle Primary students

Short attention span

**Lack of self-discipline
for learning**

**Working well
with others**

**Independence for
self-management**

**Increased
academic rigour**



Frequently Asked Questions

Learning experiences

How is classing done when students progress from P2 to P3?

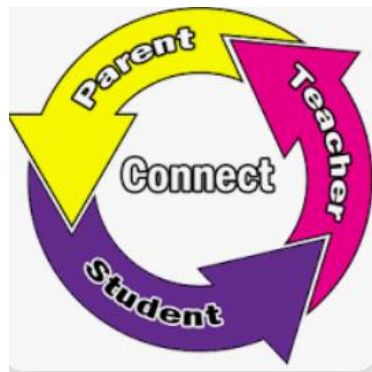
Assessment

What are the modes of assessment at P3 and how should parents support our child in preparation?





White Sands TEAM



Every White Sandian, a success story

