

Every White Sandian, a success story

**P6 School-Parents
Engagement &
Communication
Session
(SPECS)**

7 February 2025





School Leader's Sharing by Ms Audrey Wong



Every White Sandian, a success story

Our School Leaders

Growth Mindset @ WSPS

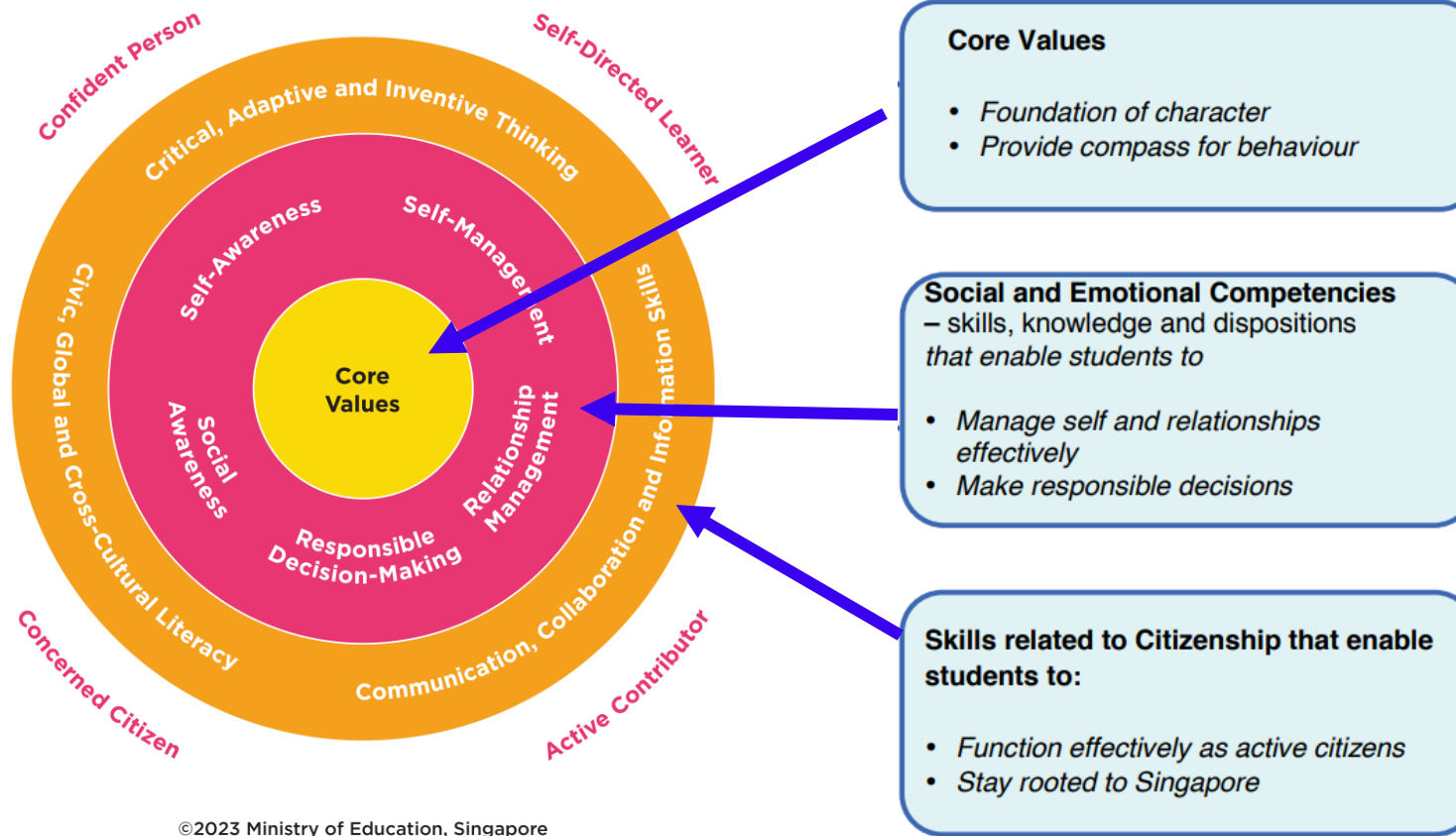


Ms Rezina Khan	Ms Audrey Wong	Ms Lina Tiong
<i>Vice-Principal</i>	<i>Principal</i>	<i>Vice-Principal (Admin)</i>

Every White Sandian, a success story



Broad shifts in Singapore's Education System



©2023 Ministry of Education, Singapore

MOE's framework for 21st Century Competencies and Student Outcomes

Every White Sandian, a success story



Broad shifts in Singapore's Education System

Growth Mindset @ WSPS 

Edusave Award for Achievement, Good Leadership and Service (EAGLES)

Up to 15% of Primary 4 to 6 students from each school who have demonstrated good conduct, and one or more of the following: (i) leadership qualities, (ii) service to community and schools, (iii) excellence in non-academic activities or (iv) 21st Century Competencies in a consistent and exemplary manner.

Award amount:

- Primary 1 to 3: \$200
- Primary 4 to 6: \$250

¹These competencies are in the outer ring of the Framework for 21st Century Competencies and Student Outcomes (21CC Framework). They are Critical, Adaptive and Inventive Thinking; Communication, Collaboration and Information Skills; Civic, Global and Cross-Cultural Literacy. Find out more about the [21CC Framework](#).

New initiative to affirm students who demonstrate good conduct and 21CC in a consistent and exemplary manner.

Every White Sandian, a success story



WSPS alignment to education shift

**Providing a caring and enabling environment
for joyful learning**

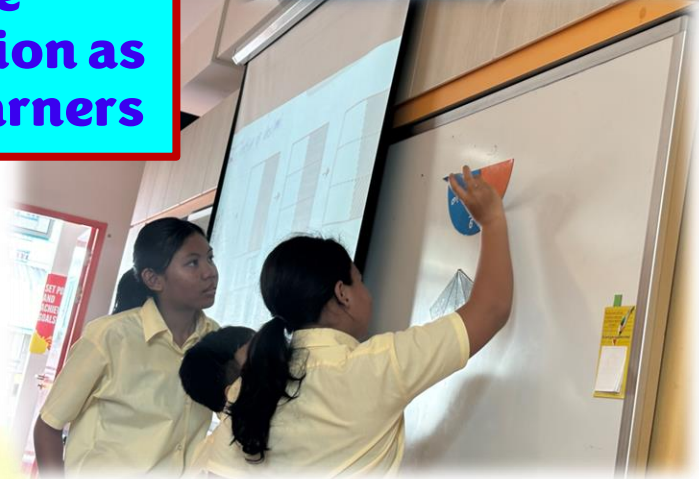
Growth Mindset @ WSPS



**Collaborative
learning through
effective
communication as
confident learners**



**First Days Of School
- Fostering positive Teacher-Student
Relationships & Peer Relationships**



Every White Sandian, a success story



Broad shifts in Singapore's Education System

Growth Mindset @ WSPS 

Refreshing our Curriculum Character and Citizenship Education 2021 (CCE 2021)

1

Making CCE more relevant and applicable

- CCE will be further integrated into lessons and activities, such as CCAs, camps and outdoor activities.
- Students will go through key student development experiences beyond the classroom from primary to pre-university, including new cohort Learning Journeys.

2

Strengthening mental health and cyber wellness education

- Students will be explicitly taught about mental health. Time spent on discussion on cyber wellness issues will be increased by 50%, on average.
- All schools will establish a peer support structure by 2022.

3

Greater emphasis on teaching of moral values in primary schools

- Students will be taught moral values through cultural stories, songs, idioms and proverbs unique to each Mother Tongue Language.
- Form Teacher Guidance Period will be broadened to include topics related to National Education and citizenship, which are better taught in a multi-cultural setting.

Growing need to increase awareness of mental health matters while developing greater resilience in students

Every White Sandian, a success story



WSPS alignment to education shift

Growth Mindset @ WSPS



Enhancing students' resilience in support of their well-being

What are you worried about as you start the new year?
[Choose as many as you like.]

- Difficulty making new friends
- Not getting along well with friends
- Learning new subjects/skills
- Too much schoolwork
- Not meeting my own expectations
- High expectations from parents/teachers
- Quarrels at home
- Money issues at home
- I am not worried about anything



You are not alone! Please talk to your parents and teachers if you need to speak to someone.

Praise and affirmation as a strategy to develop students' Growth Mindset

Termly Check-in Surveys



Heart-to-heart Conversations



Every White Sandian, a success story



Broad shifts in Singapore's Education System

THE PSLE CHANGES ARE PART OF A BIGGER STORY

Over the years, we have been fine-tuning the education system to help our students discover and develop their strengths and interests, while moving away from an over-emphasis on academic results.

Our PSLE scoring changes aim to:

- Reduce fine differentiation at a young age
- Recognise students' level of achievement, regardless of how their peers have done



Moving away from an over-emphasis on academic results, focusing on a child's holistic development.

Adjusting School-based Assessment Structures

P1

- > No examination, but weighted assessments are conducted throughout the year

P2

- > Weighted assessments throughout the year and year-end exam

P3-P6

- > Mid-Year Exam (MYE) and year-end exam, in addition to weighted assessments throughout the year

Secondary level

- > Most schools conduct Mid-Year Exam (MYE) and year-end exam, in addition to other weighted assessments throughout the year

P1 & P2

- > Removal of all weighted assessments (including P2 year-end exam)

S1

- > Removal of Mid-Year Exam (MYE)

From P3 to S4/5

- > Schools to conduct no more than one weighted assessment per subject, per school term. This is in addition to Mid-Year Exam (MYE) and year-end exam at levels where this is applicable

P3, P5, S3

- > Removal of Mid-Year Exam (MYE)



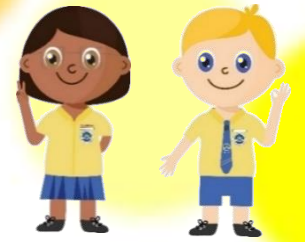
Removal of MYE @ P6 from 2023 onwards

Adjusted school-based assessment structures provide autonomy for schools to provide opportunities for student-initiated learning





PSLE Scoring System



AL scores for subjects in:

Standard Level

Foundation Level

AL	Raw mark range
1	≥90
2	85-89
3	80-84
4	75-79
5	65-74
6	45-64
7	20-44
8	<20

Grades for Foundation subjects	Foundation raw mark range	Equivalent Standard level AL
A	75-100	6
B	30-74	7
C	<30	8

Eligibility Criteria for Sec School HMTL

- An **overall PSLE Score** of 8 or better
- OR
- An **overall PSLE Score** of 9 to 14 (inclusive); **and** attained AL 1 / AL 2 in MTL or Distinction / Merit in HMTL



Official (Open / Non-sensitive)

Every White Sandian, a success story



PSLE Posting System (starting with 2024 Sec 1 cohort)



Changes to Secondary 1 posting

- Starting from the 2024 Sec 1 cohort, Pri 6 students will be admitted to Sec 1 through three posting groups
- Posting groups are assigned based on PSLE scores, mapped from existing PSLE score ranges for Express, N(A) and N(T) streams

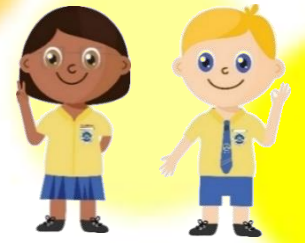
PSLE Score	Posting Group	Subject level for most subjects
4-20	3	G3
21 and 22	2 or 3	G2 or G3
23 and 24	2	G2
25	1 or 2	G1 or G2
26 - 30 (with AL 7 in EL and MA)	1	G1

Infographic: Rafa Estrada Source: Ministry of Education, Feb 28, 2023





Full Subject-Based Banding (Full SBB)



One Secondary Education, Many Subject Bands

With Full SBB, students can take subjects at G1/G2/G3 academic levels, which are mapped from today's N(T)-, N(A)-, and O-Level subjects respectively.

Start of Sec 1

Subject levels are assigned based on PSLE results



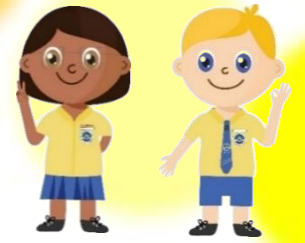
Beyond Start of Sec 1

Subject levels depend on students' abilities





What are the changes in Full SBB?

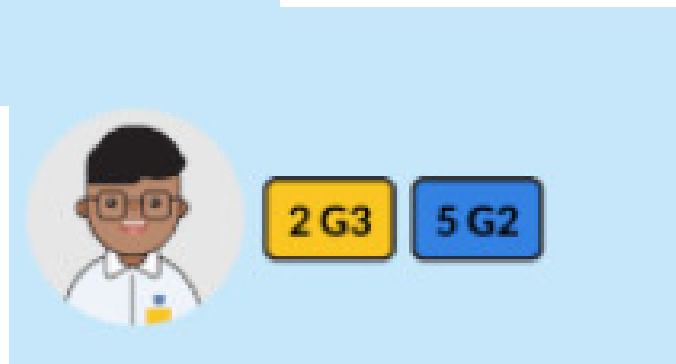


2. Mixed Form Classes at Lower Sec

- Pupils will be grouped into **mixed form classes**, with each form class comprising students of different learner profiles.



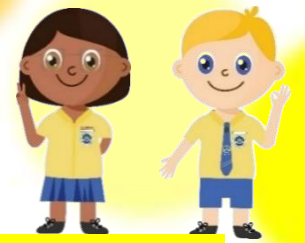
Mixed Form Classes
Under Full SBB



Every White Sandian, a success story



What are the changes in Full SBB?



National Examinations

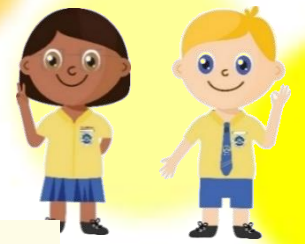
- From the 2027 graduating cohort, students will sit for the new **Singapore-Cambridge Secondary Education Certificate (SEC) examination**. The SEC will reflect the subjects and subject levels that students offer.



Every White Sandian, a success story



PSLE Posting System (starting with 2024 Sec 1 cohort)



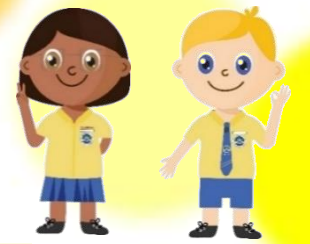
CHOICE ORDER OF SCHOOLS MATTERS MORE

- Students continue to have **six choices** in selecting their secondary schools.
- Similar to past years, students continue to be posted to a secondary school based on **academic merit, i.e., PSLE Score**, and their **school choice order**.
- If there are two or more students with the same PSLE Score vying for the last remaining place(s) in a school, the following tie-breakers will be used in the following order:
 1. CITIZENSHIP
 2. CHOICE ORDER OF SCHOOLS (New tie-breaker from 2021 onwards)
 3. COMPUTERISED BALLOTING
- The new tie-breaker based on school choice order recognises the different considerations that families have in making school choices.





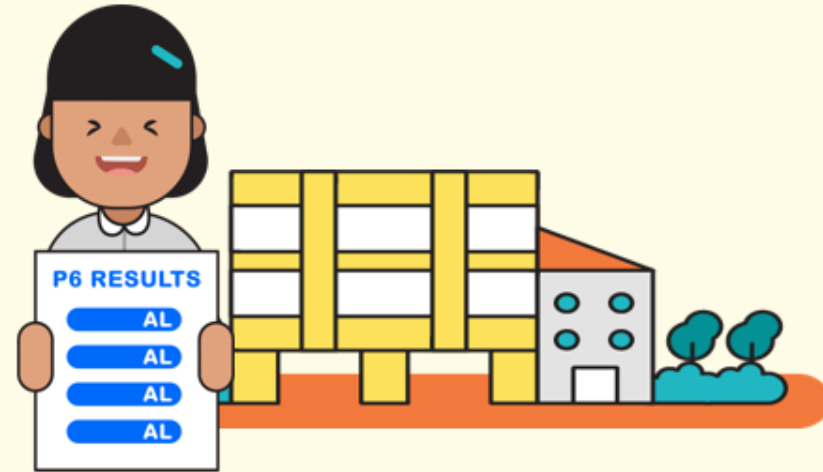
PSLE Posting System (starting with 2024 Sec 1 cohort)



PREPARING FOR THE S1 POSTING EXERCISE



Use all 6 options with a range of Cut-off Points as this will increase your child's chances of being posted to a school of their choice.

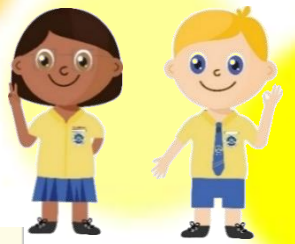


Take reference from schools' PSLE Score ranges, which serves as a guide for you and your child to shortlist school choices. Consider at least 2-3 schools where your child's PSLE Score is better than the school's Cut-off Point.

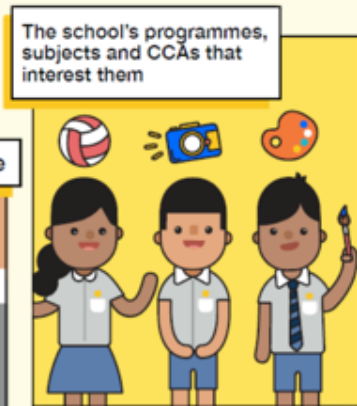




PSLE Posting System (starting with 2024 Sec 1 cohort)



PREPARING FOR THE S1 POSTING EXERCISE



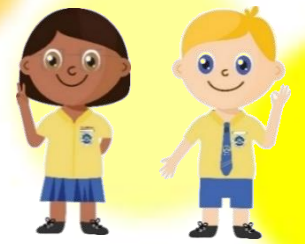
Shortlist schools that offer programmes that cater to the your child's strengths and interests, and that provide suitable learning environments.

Rank your child's preferred school higher in the school choice order. This will increase your child's chances of being posted to that school, if tie-breakers are required.





Direct School Admission - Secondary (DSA - Sec)



P6 students can apply for DSA-Sec based on a wide-range of talents, including:

- Sports and games
- Visual, literary and performing arts
- Debate and public speaking
- Science, mathematics and engineering
- Languages and humanities
- Uniformed groups
- Leadership



**Before
MAY**

Explore schools and their talent areas, and shortlist suitable schools



MAY

Apply for DSA



**JUN to
SEP**

Attend selection trials, interviews and auditions



By SEP

Receive DSA offers if successful



DSA allows students to **seek admission to a secondary school of their choice** on the **basis of talents and achievements** that may not be demonstrated at the Primary School Leaving Examination (PSLE).



Every White Sandian, a success story

Your Handy Guide to Cultivating Healthy Screen Use in Children



Growth Mindset @ WSPS



Tips on healthy screen use for your family!



Manage Your Child's Screen Use

- Consider the needs of your child when setting boundaries of screen use as a family. Discuss with your child where necessary.
- Have a plan that balances screen use with other activities.

Model Healthy Media Habits

- Review your own media habits.
- Encourage daily 'screen-free' times, especially during family meals or when interacting with one another.

Encourage Meaningful Screen Use

- Make sure your child is watching content appropriate for their age.
- Discuss with your child about what they are viewing.



7 to 12 years

- Less than 2 hours of screen use a day, unless related to school work.
- Agree on a screen use plan or timetable.
- Use parental control settings and check content ratings to ensure content is age-appropriate.
- Talk to your child often on what they are viewing online. Offer advice regularly.

DO NOT...

- ✗ Use screens during meals and one hour before bedtime.
- ✗ Allow access to social media services.
- ✗ Give your child mobile devices with unrestricted access to the internet and applications.

Every White Sandian, a success story



Home-school partnership

Be mindful of your own actions, reactions, and expectations

- As parents, we may sometimes focus on the grades our child attains and feel disappointed depending on their performance.
- Manage your expectations of your child, while being careful not to project your own expectations on them.
- Remember that the hard work, dedication and resilience that they are able to show now will also serve them well in life.



Supporting your child for success



Signs of S.T.R.E.S.S.

Your child may be overwhelmed if they show a combination of the following:

- Struggles to pay attention to studies or activities
- Tiredness, loss of appetite and sleep
- Rebellious streak
- Excuses to miss school/class
- Stays away from others
- Sulking



Home-school partnership



Don't focus only on results

Encourage them to pursue their strengths, interests and try new things.



Set goals together

Talk about their strengths, abilities and goals and how they can achieve them.



Common challenges faced by P6 students

Managing expectations from parents and self

Time and device management

Biological changes

Managing both CCA commitment and academic learning

Peer relationships



Some Success Stories to share...

Ms Dana (Mother of Jazz in P6A)

We would like to express our gratitude to her for showing support and trust to the school when another parent expressed anxiety about being unable to contact the child during the P5 level camp. Her initiative to help clarify in the class group chat helped ease the parent's anxiety. We appreciate her advocating for the school's efforts in providing a holistic and caring environment for White Sandians to learn and grow in.



Every White Sandian, a success story

Some Success Stories to share...

P6B Aisha's parents

Aisha's parents' involvement in her educational journey goes beyond academics, extending to school events and activities. For example, their proactive support during the preparation for Racial Harmony Day presentations — such as providing meaningful photos and assisting Aisha in getting her materials ready. Such strong parental support helped Aisha develop greater confidence and also demonstrated the importance of home-school partnership. Thank you for your fantastic support in helping her embrace her roles and responsibilities with greater enthusiasm.



Some Success Stories to share...

Mdm Juwita (Mother of Kaisara in P6E)

We would like to thank Kaisara's mother for being open to feedback and suggestions shared by C4RE Teachers during “G.R.O.W. with Me! Conversations” last year. Her effort in encouraging Kaisara to borrow books from the library during the holidays helped the child improve in her language skills. Thank you for your partnership with the school teachers and your support at home has made a big difference in Kaisara's progress.



Year Head's Sharing by Mr Wong Yexiang





Broad Shifts in Singapore's Education System

Student Development Team

Growth Mindset @ WSPS



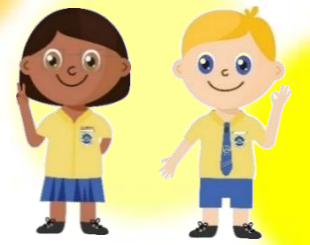
			
Mr Wong Year Head	Ms Julie Katherina Assistant Year Head	Mr Gary Peh Head (Student Management)	Mrs Jacqueline Bay Student Management Team
wong_yexiang@moe.edu.sg	julie_katherina@moe.edu.sg	peh_gary@moe.edu.sg	lim_sze_hui@moe.edu.sg



Every White Sandian, a success story



Key Learning Experiences (P1 – P6)



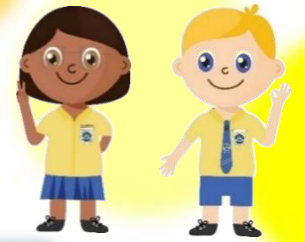
Term 1	<ul style="list-style-type: none">❖ FDOS❖ CNY Celebrations❖ Total Defence Day❖ Healthy Lifestyle Week❖ ALP
Term 2	<ul style="list-style-type: none">❖ Hari Raya Celebrations❖ Maths & Science Week❖ International Friendship Day❖ LJ: Insyncg Recording Studio Tour❖ LJ: Gardens by the Bay
Term 3	<ul style="list-style-type: none">❖ Singapore Armed Forces Day❖ MTL Fortnight❖ Racial Harmony Day❖ National Day Celebrations❖ ALP❖ P5 Camp❖ NE Show
Term 4	<ul style="list-style-type: none">❖ ArtBeat Week❖ Character Recognition Day❖ HeARTS Shine❖ Inclusion Week❖ Deepavali



Every White Sandian, a success story



Learning Journeys



✓ February – Visit to Lee Kong Chian Natural History Museum



✓ March – Visit to Asian Civilisation Museum

UNDERSTANDING
ASIA
THROUGH
SINGAPORE

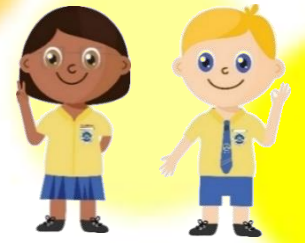
ASIAN CIVILISATIONS
MUSEUM

*More details will be shared via
PG nearer the date of
programme*

Every White Sandian, a success story



Learning Experiences – CCA



ABILITIES

| Logical & Analytical Thinking |
| Critical Thinking | Creative Thinking |



SKILLS

| Problem Solving | | Leadership | | Social |
| Emotional | | Communication | | Technology |



VALUES

| Social | | Ethical | | Recreational |



Every White Sandian, a success story

Tier 1 broad-based programme (P6 overview)

Code for Fun programme by IMDA and MOE:
Sphero

- Develop an appreciation of core computational thinking and coding concepts through simple visual programming-based lessons using robotics
- Have the exposure to emerging technologies such as artificial intelligence and cybersecurity



***Will be conducted as part of
Post-PSLE Programme***





Assessment Matters



- *Since 2023, mid-year examination for all levels have been removed and replaced with weighted assessments.*
- *Subject teachers will inform students on the WA actual dates 1 week before the assessment.*

Level	Term 1 (15%)	Term 2 (15%)	Term 3 (70%)	Term 4
P6	Weighted Assessment (WA)		Preliminary Examinations	<i>Address learning gaps from Prelim in preparation of PSLE</i>

Detailed assessment plan has been sent out via PG on 24 January





Daily learning in the form of homework



I never studied art, but taught myself to draw by imitating the New Yorker cartoonists of that day, instead of doing my homework.
Bill Keane

INFORMATION FOR PARENTS

HOMework GUIDELINES

Homework is defined as work that a teacher gives a student to do out of class. It is intended to be a meaningful experience that prepares pupils for lessons, practices basic skills, and reinforces concepts taught in class. It is also a good platform to develop good study habits and responsibility for their own learning. Below is the estimated daily time that pupils should spend completing their work for the different levels.

Levels	P1 & P2	P3 & P4	P5 & P6
Estimated daily time spent for homework	30 minutes	60 minutes	90 minutes

Close monitoring of students' completion of daily homework is key to students' effort towards success



Supporting your child for success

Term 1 & 2

Remedial on
Tuesdays for
selected
students
(2 – 4.05 pm)

English
Math
Science

Holidays Programme

25 – 27 June (AM)

11 & 12 Sep (AM)

Term 3

Supplementary
lessons for all

Tuesdays &
Wednesdays
(2 subjects per
day)

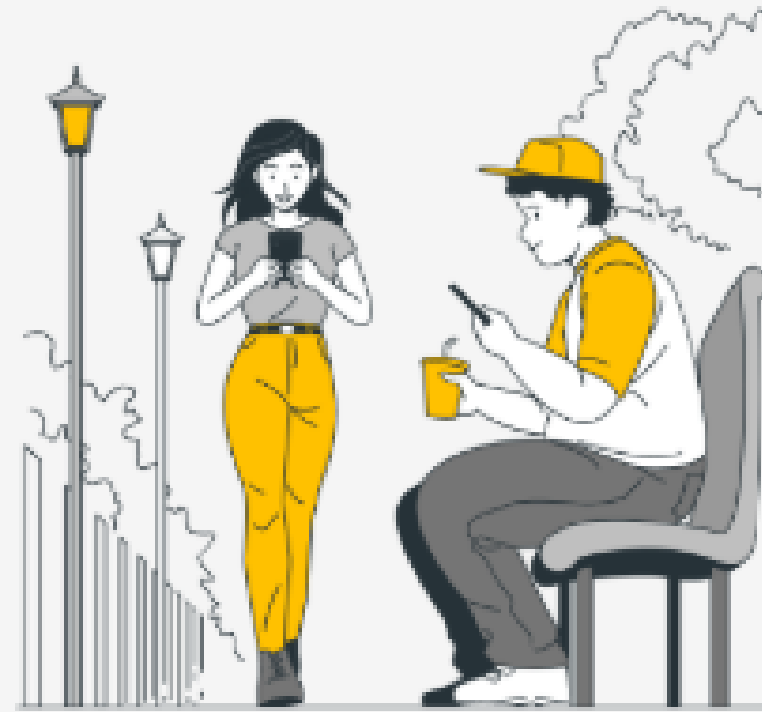


Supporting your child for success



Common Signs of Cell Phone Addiction

- Feeling anxious without a phone
- An inability to stop checking it
- Checking it as the first and last thing each day
- Overuse of apps and following too many pages
- Thinking a smartphone solves everything
- Compulsive checking for missed notifications
- Using a phone at inappropriate times
- Missing other opportunities to spend time on a phone





Supporting your child for success



SOCIAL MEDIA CLEANSE

7 STEPS TO SOCIAL MEDIA CLEANSE

TURN OFF SOCIAL MEDIA NOTIFICATIONS OR SWITCH TO DND MODE



UNFOLLOW OR UNFRIEND PEOPLE WHO ANNOY OR DISTURB YOU

Goodbye

LEAVE UNINSPIRING OR UNPRODUCTIVE FACEBOOK OR WHATSAPP GROUPS



UNTAG OLD AND UNNECESSARY PHOTOS



MINIMISE SOCIAL MEDIA USAGE TO 20 MINUTES PER DAY

UNFOLLOW CONVERSATIONS THAT DISTURB YOU





What parents can do?

To check on student well-being at least weekly

- **Checking on well-being** – Check on the high and low points.
- **Checking on school related work** – *Check if the student is coping well work with learning and homework ; Check if student has the necessary items for school.*





What parents can do?



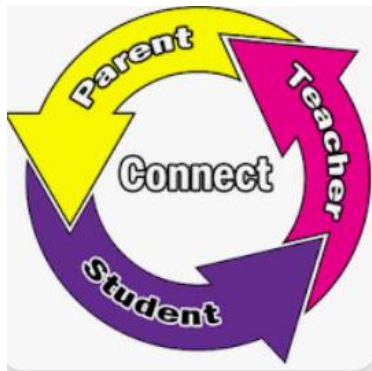
To reinforce what was taught in school

- **Making choices** – **Traffic Light (Stop, Think, Act/Do)**;
- **Be an upstander for self and others** – *Tell the person to stop what he/she is doing; Share reason(s) and feelings – I do not like it / I'm hurt*
- **Seek help from a trusted adult** – *C4RE Teachers, Discipline Teachers, Counsellor, parents or Year Heads.*





White Sands TEAM



Every White Sandian, a success story

