

*Every White Sandian, a success story*

## **School Leader's Sharing**

# **P6 School-Parents Engagement & Communication Session (SPECS)**

**16 February 2024**





# Welcome P6 Parents!



## Sharing outline

### ✓ Sharing by School Leader

- Broad shifts in Singapore's Education System
- WSPS alignment to education shift
- PSLE Scoring & Posting System
- Sec School Full Subject-Based Banding
- Direct School Admission

### ✓ Sharing by Student Development Team

- Supporting your child in effective stress management



Every White Sandian, a success story

# Our School Leaders

Growth Mindset @ WSPS



**Ms Audrey Wong**  
**Principal**



**Ms Rezina Khan**  
**Vice-Principal**



**Ms Lina Tiong**  
**Vice-Principal**  
**(Admin)**



*Every White Sandian, a success story*





# **Broad shifts in Singapore's education system**

*Every White Sandian, a success story*

# Broad shifts in Singapore's Education System

Growth Mindset @ WSPS



## THE PSLE CHANGES ARE PART OF A BIGGER STORY

Over the years, we have been fine-tuning the education system to help our students discover and develop their strengths and interests, while moving away from an over-emphasis on academic results.

Our PSLE scoring changes aim to:

- Reduce fine differentiation at a young age
- Recognise students' level of achievement, regardless of how their peers have done



Moving away from an over-emphasis on academic results, focusing on a child's holistic development.

## Adjusting School-based Assessment Structures

### P1

- > No examination, but weighted assessments are conducted throughout the year

### P2

- > Weighted assessments throughout the year and year-end exam

### P3-P6

- > Mid-Year Exam (MYE) and year-end exam, in addition to weighted assessments throughout the year

### Secondary level

- > Most schools conduct Mid-Year Exam (MYE) and year-end exam, in addition to other weighted assessments throughout the year

### P1 & P2

- > Removal of all weighted assessments (including P2 year-end exam)

### S1

- > Removal of Mid-Year Exam (MYE)

### From P3 to S4/5

- > Schools to conduct no more than one weighted assessment per subject, per school term. This is in addition to Mid-Year Exam (MYE) and year-end exam at levels where this is applicable

### P3, P5, S3

- > Removal of Mid-Year Exam (MYE)



Adjusted school-based assessment structures provide autonomy for schools to provide opportunities for student-initiated learning

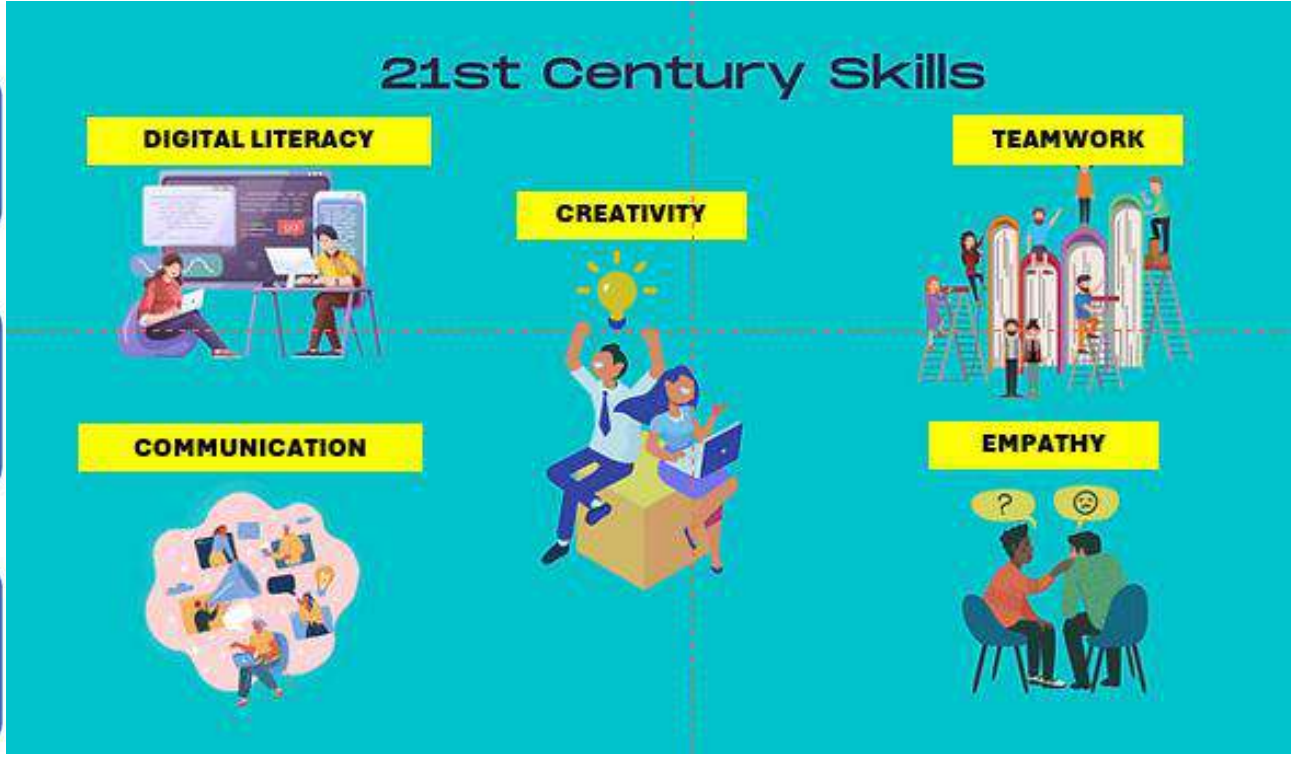
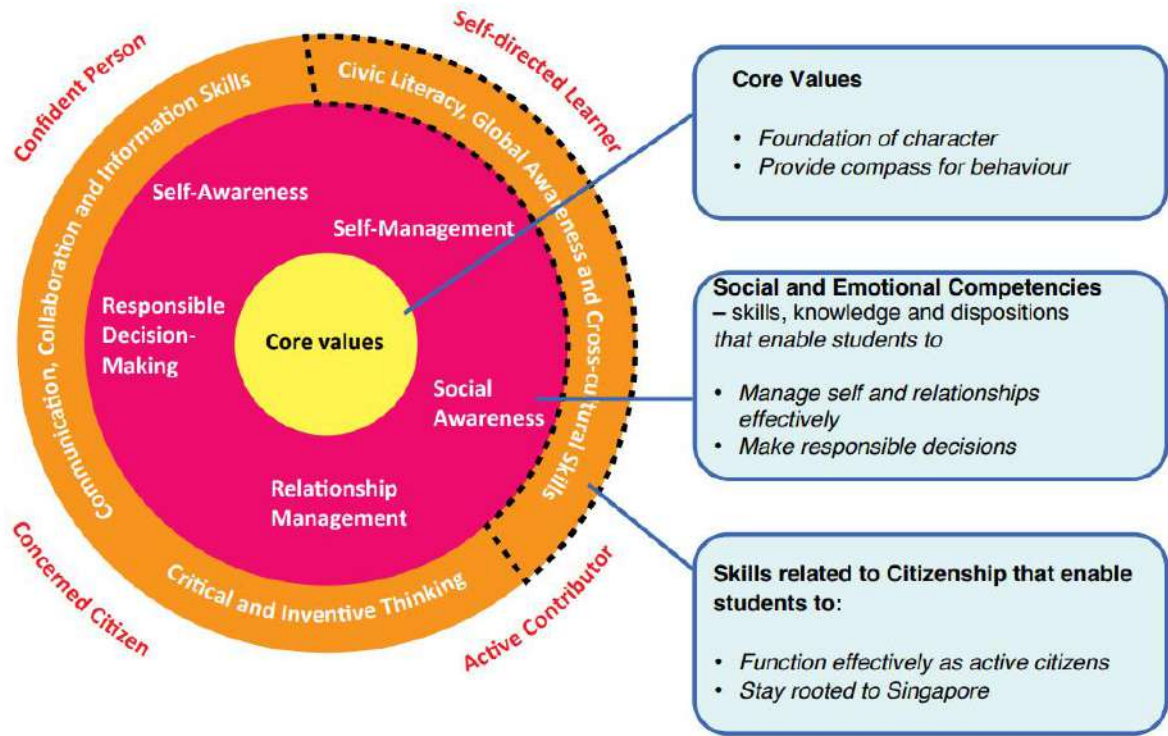
Every White Sandian, a success story





# Broad shifts in Singapore's Education System

## MOE's framework for 21<sup>st</sup> Century Competencies and Student Outcomes



# Broad shifts in Singapore's Education System

Growth Mindset @ WSPS



## Refreshing our Curriculum Character and Citizenship Education 2021 (CCE 2021)

1

### Making CCE more relevant and applicable

- CCE will be further integrated into lessons and activities, such as CCAs, camps and outdoor activities.
- Students will go through key student development experiences beyond the classroom from primary to pre-university, including new cohort Learning Journeys.

2

### Strengthening mental health and cyber wellness education

- Students will be explicitly taught about mental health. Time spent on discussion on cyber wellness issues will be increased by 50%, on average.
- All schools will establish a peer support structure by 2022.

3

### Greater emphasis on teaching of moral values in primary schools

- Students will be taught moral values through cultural stories, songs, idioms and proverbs unique to each Mother Tongue Language.
- Form Teacher Guidance Period will be broadened to include topics related to National Education and citizenship, which are better taught in a multi-cultural setting.

**Growing need to increase awareness of mental health matters while developing greater resilience in students**

*Every White Sandian, a success story*





# Broad shifts in Singapore's Education System

Growth Mindset @ WSPS 

## Initiatives announced in 2023

### 1 Every Student a Creator, Connector and Contributor

- Enhanced 21CC Framework and Priority Emerging 21CC (E21CC)

### 2 EdTech as a Capability Multiplier

- "Transforming Education through Technology" Masterplan 2030
- Strengthening Student Cyber Wellness

### Enablers

*Schools can decide when to implement and which enablers to tap on.*



### From the School as our World, to the World as our School



- School White Area and Canteen Grant
- Additional funding for flexible furniture
- Establishment of Partnerships Engagement Office



### Staff Capacity & Capabilities

- Teacher Growth Model (2024)

*Every White Sandian, a success story*





# **WSPS alignment to education shift**

*Every White Sandian, a success story*

# WSPS alignment to education shift

Growth Mindset @ WSPS



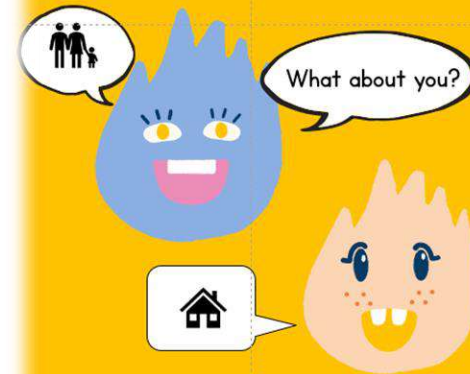
## Developing passionate learners with exemplary character

Instilling positive routines for students to develop good habit of respectful behaviour and responsible care for environment

**G.E.A.R.** - Setting the tone for a positive experience  
**U.P.** - Useful Practices to set the routine for learning

1. **G**reet
2. **E**nvironment: **E**veryday **R**esponsibility
3. **A**ttendance, **A**ttire check & **A**ttention
4. **R**eview & **R**eject on Learning

### 3. I HOPE WE WILL RESPECT ONE ANOTHER.



I will remember to use respectful language when talking to my friends online and offline.

I will take turns to speak in a group discussion.

I will try to understand my friend's opinion first before getting angry.

Clear and explicit learning of positive behaviour expected of White Sandians

*Every White Sandian, a success story*





# WSPS alignment to education shift

**Providing a caring and enabling environment  
for joyful learning**

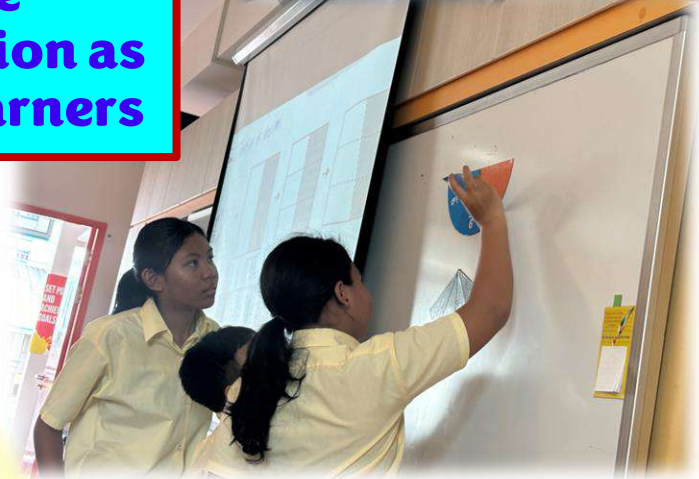
Growth Mindset @ WSPS



**Collaborative  
learning through  
effective  
communication as  
confident learners**



**First Days Of School  
- Fostering positive Teacher-Student  
Relationships & Peer Relationships**



*Every White Sandian, a success story*





# WSPS alignment to education shift

## Enhancing students' resilience in support of their well-being

What are you worried about as you start the new year?  
[Choose as many as you like.]

- Difficulty making new friends
- Not getting along well with friends
- Learning new subjects/skills
- Too much schoolwork
- Not meeting my own expectations
- High expectations from parents/teachers
- Quarrels at home
- Money issues at home
- I am not worried about anything



You are not alone! Please talk to your parents and teachers if you need to speak to someone.

## Termly Check-in Surveys



## Heart-to-heart Conversations

## Praise and affirmation as a strategy to develop students' Growth Mindset



*Every White Sandian, a success story*



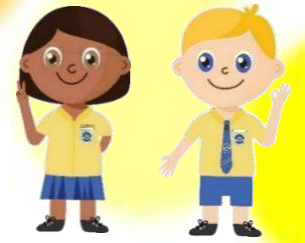
# **PSLE Scoring and Posting System** *(since 2021)*

*Every White Sandian, a success story*





# PSLE Scoring System



## AL scores for subjects in:

Standard Level

Foundation Level

AL	Raw mark range
1	≥90
2	85-89
3	80-84
4	75-79
5	65-74
6	45-64
7	20-44
8	<20

Grades for Foundation subjects	Foundation raw mark range	Equivalent Standard level AL
A	75-100	6
B	30-74	7
C	<30	8

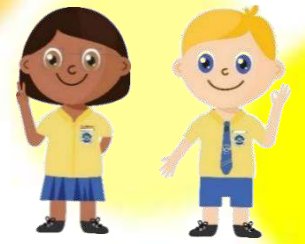


Official (Open / Non-sensitive)

Every White Sandian, a success story



# PSLE Scoring System Secondary School HMTL Criteria



## Eligibility Criteria for Sec School HMTL

- An **overall PSLE Score of 8 or better**

OR

- An **overall PSLE Score of 9 to 14 (inclusive); and  
attained AL 1 / AL 2 in MTL or Distinction / Merit in HMTL**

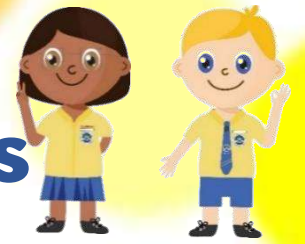


*Every White Sandian, a success story*



# PSLE Scoring System

## MTL Exemption & Asian /Foreign Languages



Pupils exempted from MTL, due to extenuating circumstances, will be assigned an MTL score between AL 6 to 8 so they have a PSLE score comprising four subjects, for the purposes of S1 Posting.

Their assigned MTL score will:

- Take reference from peers with similar scores for English, Mathematics, and Science.
- Maintain parity of treatment with students who take Foundation MTL (who will score between AL 6 to 8)



*Every White Sandian, a success story*





# PSLE Posting System (starting with 2024 Sec 1 cohort)



## Changes to Secondary 1 posting

- Starting from the 2024 Sec 1 cohort, Pri 6 students will be admitted to Sec 1 through three posting groups
- Posting groups are assigned based on PSLE scores, mapped from existing PSLE score ranges for Express, N(A) and N(T) streams

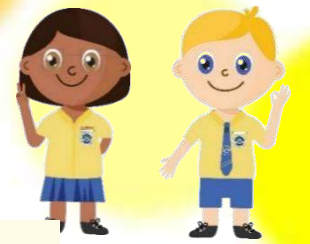
PSLE Score	Posting Group	Subject level for most subjects
4-20	3	G3
21 and 22	2 or 3	G2 or G3
23 and 24	2	G2
25	1 or 2	G1 or G2
26 - 30 (with AL 7 in EL and MA)	1	G1

Infographic: Rafa Estrada Source: Ministry of Education, Feb 28, 2023





# PSLE Posting System (starting with 2024 Sec 1 cohort)



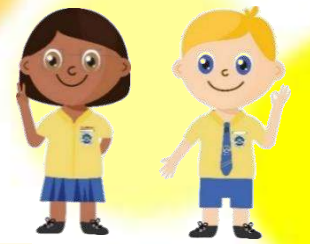
## CHOICE ORDER OF SCHOOLS MATTERS MORE

- Students continue to have **six choices** in selecting their secondary schools.
- Similar to past years, students continue to be posted to a secondary school based on **academic merit, i.e., PSLE Score**, and their **school choice order**.
- If there are two or more students with the same PSLE Score vying for the last remaining place(s) in a school, the following tie-breakers will be used in the following order:
  1. CITIZENSHIP
  2. CHOICE ORDER OF SCHOOLS (New tie-breaker from 2021 onwards)
  3. COMPUTERISED BALLOTING
- The new tie-breaker based on school choice order recognises the different considerations that families have in making school choices.





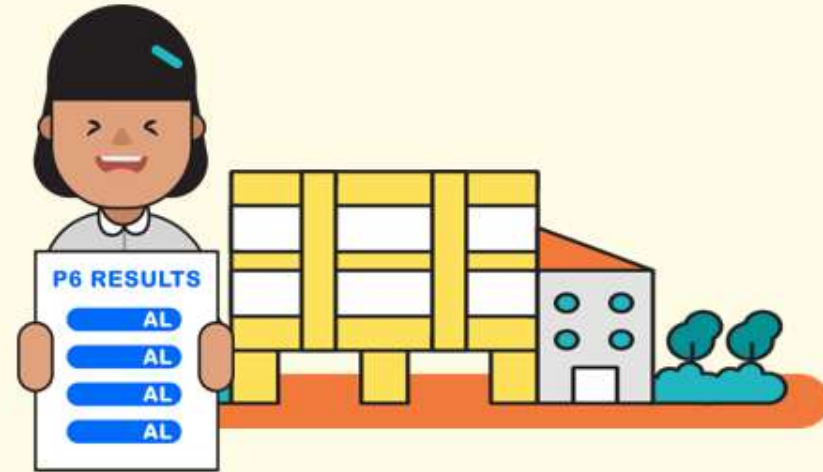
# PSLE Posting System (starting with 2024 Sec 1 cohort)



## PREPARING FOR THE S1 POSTING EXERCISE



Use all 6 options with a range of Cut-off Points as this will increase your child's chances of being posted to a school of their choice.



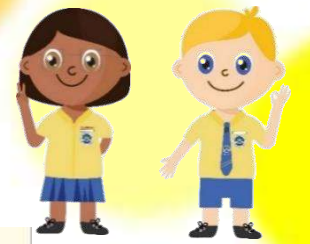
Take reference from schools' PSLE Score ranges, which serves as a guide for you and your child to shortlist school choices. Consider at least 2-3 schools where your child's PSLE Score is better than the school's Cut-off Point.



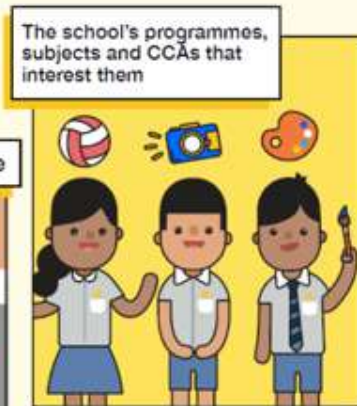




# PSLE Posting System (starting with 2024 Sec 1 cohort)




## PREPARING FOR THE S1 POSTING EXERCISE



Shortlist schools that offer programmes that cater to the your child's strengths and interests, and that provide suitable learning environments.

Rank your child's preferred school higher in the school choice order. This will increase your child's chances of being posted to that school, if tie-breakers are required.





# **Full Subject-Based Banding (SBB)**

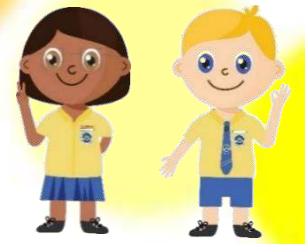
***(for all secondary schools from 2024)***



*Every White Sandian, a success story*



# Full Subject-Based Banding (Full SBB)



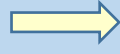
Full SBB is part of MOE's ongoing efforts to nurture the joy of learning and develop multiple pathways to cater to the different strengths and interest of our students.

## FULL SBB TIMELINE

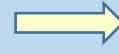
2020



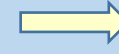
2021



2022 –  
2024



2027



2028

- Start of Full SBB in 28 Sec Schools

- First cohort of P6 pupils undergo new PSLE scoring and Sec 1 (S1) posting system

- Progressive roll-out of Full SBB to more Sec Schools

- First cohort of pupils to sit for a common national examination, and receive a common national certification

- First cohort of students to be admitted to Post-Sec Education Institutes (PSEIs) under revised admissions criteria

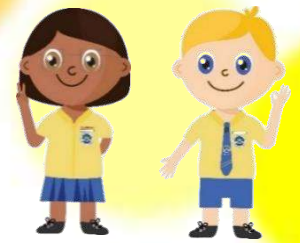


*Every White Sandian, a success story*





# What are the changes in Full SBB?



## 1. Removal of Express, Normal (Academic) and Normal (Technical) courses

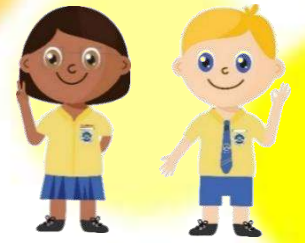
- From 2024, the Express, N(A) and N(T) courses will be removed.
- Pupils will continue to be posted into Sec Schools through the 3 scoring bands. Details will be shared at a later date.
- Throughout their secondary school education, pupils can take subjects at **three subject levels, known as G1, G2, G3** (G stands for General), mapped from today's N(T), N(A) and Express standards respectively.



*Every White Sandian, a success story*



# What are the changes in Full SBB?



## 2. Mixed Form Classes at Lower Sec

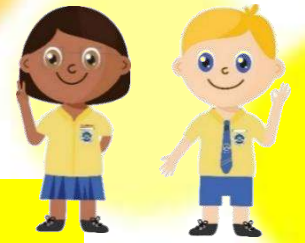
- Pupils will be grouped into **mixed form classes**, with each form class **comprising students of different learner profiles**.



*Every White Sandian, a success story*



# What are the changes in Full SBB?



## 3. Offering subjects at a more or less demanding level

*Subjects at a more demanding level* - English Language, Mother Tongue Languages, Mathematics and Science

Subjects offered under SBB(Sec)	Eligibility criteria		
	PSLE subject level	PSLE AL for the specific subject	Option to take the Secondary One subject at:
•English Language •Mother Tongue Languages •Mathematics •Science	Standard	AL 5 or better	G3 or G2
		AL 6	G2
	Foundation	AL A	G2

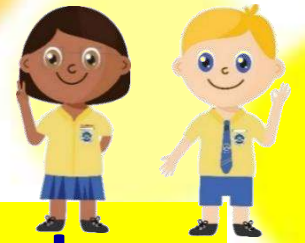


*Every White Sandian, a success story*





# What are the changes in Full SBB?



## 3. Offering subjects at a more or less demanding level

*Subjects at a more demanding level – Geography, History and Literature in English*

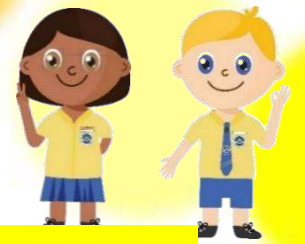
Humanities subjects offered under Full SBB	Eligibility criteria		
	Humanities subject level	School-based assessment	Option to take Humanities at a more demanding level from Secondary Two:
<ul style="list-style-type: none"> <li>•Geography</li> <li>•History</li> <li>•Literature in English</li> </ul>	G2	Aptitude and interest for specific subject	Any of these subject(s) at G3
	G1		One of these subjects at G2



*Every White Sandian, a success story*



# What are the changes in Full SBB?



## 3. Offering subjects at a more or less demanding level

### *Subjects at a less demanding level*

- At Secondary One, students will start at a subject level based on their PSLE Score. Students may have flexibility to offer some subjects at a more/less demanding level from Secondary One based on their PSLE performance in individual subjects.

### *Mother Tongue Languages (MTL) at a less demanding level*

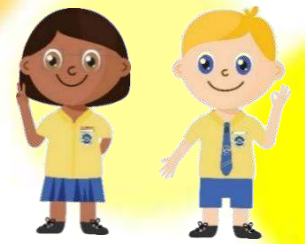
- Students who face exceptional difficulties coping with MTL learning will have the option to offer G1 or G2 MTL. With the greater flexibility afforded by the MTL offerings at G1, G2, and G3, MTL 'B' will be discontinued in secondary schools.



*Every White Sandian, a success story*



# What are the changes in Full SBB?



## 4. Subjects at lower secondary

### *Common Curriculum subjects*

- In their mixed form classes, pupils will take following subjects at a common level: Art, Character and Citizenship Education, Design and Technology, Food and Consumer Education, Music & Physical Education

### *Subjects Offered at G1, G2 and G3*

- English Language, Mother Tongue Languages, Mathematics, Science, and Humanities subjects will be offered at G1, G2 and G3.

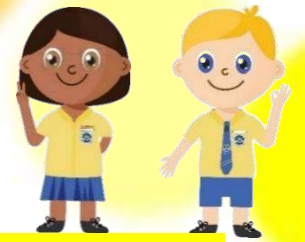


*Every White Sandian, a success story*





# What are the changes in Full SBB?



## 5. National Examinations

- From the 2027 graduating cohort, students will sit for the new **Singapore-Cambridge Secondary Education Certificate (SEC) examination**. The SEC will reflect the subjects and subject levels that students offer.



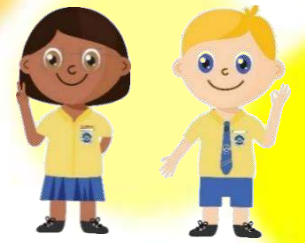
*Every White Sandian, a success story*

# **Direct-School Admission (DSA)**

*Every White Sandian, a success story*



# Direct School Admission – Secondary (DSA – Sec)



## Nurturing Aptitudes & Enhancing Access to Opportunities

### Recognising Talents and Achievements

- Direct School Admission (DSA) places will be increased. From 2018, all secondary schools will offer up to 20% of their non-IP places through DSA.
- By 2018, schools will stop using general academic ability tests for DSA selection.
- From 2019, DSA applications can be made via a common portal.

## Two ways of seeking admission into Secondary 1:

- **Sec 1 (S1) Posting Exercise**
  - After PSLE results release
- **Direct School Admission (DSA)–Sec Exercise**
  - Application starts in April - May



*Every White Sandian, a success story*

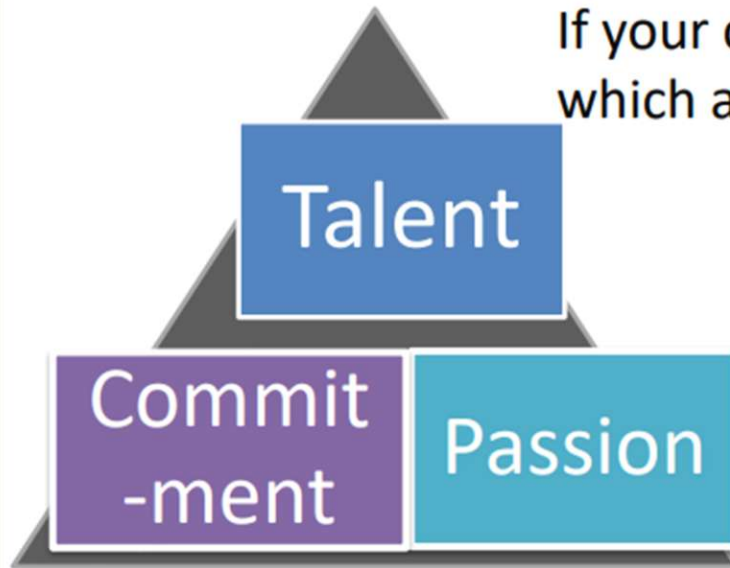




# Direct School Admission – Secondary (DSA – Sec)



## Is the DSA-Sec right for my child?



If your child has specific **talents** which a school offers the DSA-Sec in

And is **passionate** about and **committed** to developing his/her strengths and interests

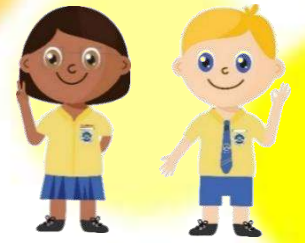
**DSA-Sec can support his/her development in that talent area.**



*Every White Sandian, a success story*



# Direct School Admission - Secondary (DSA - Sec)



DSA allows students to **seek admission to a secondary school of their choice** on the **basis of talents and achievements** that may not be demonstrated at the Primary School Leaving Examination (PSLE).



*Every White Sandian, a success story*



# Direct School Admission – Secondary (DSA – Sec)



## Which school should my child apply to?

- Look for a school with **programmes that match your child's strengths and interests**
  - Schools are looking out for students whose interests and talents they can develop further.
  - Learn more about the secondary school's **pace of learning** and overall range of programmes
- **Get the latest information** about what each school offers by:
  - Visiting schools' websites
  - Attending schools' Open Houses to also experience their environments and cultures
  - Visiting the MOE's DSA-Sec website (will be updated around April)



*Every White Sandian, a success story*



# Home-school Partnership

*Every White Sandian, a success story*

# Home-school partnership

## Be mindful of your own actions, reactions, and expectations

- As parents, we may sometimes focus on the grades our child attains and feel disappointed depending on their performance.
- Manage your expectations of your child, while being careful not to project your own expectations on them.
- Remember that the hard work, dedication and resilience that they are able to show now will also serve them well in life.



## Supporting your child for success



### Signs of S.T.R.E.S.S.

Your child may be overwhelmed if they show a combination of the following:

- Struggles to pay attention to studies or activities
- Tiredness, loss of appetite and sleep
- Rebellious streak
- Excuses to miss school/class
- Stays away from others
- Sulking



# Common challenges faced by P6 students

**Managing expectations from parents and self**

**Time and device management**

**Biological changes**

**Managing both CCA commitment and academic learning**

**Peer relationships**





# Frequently Asked Questions

## Curriculum & assessment

- Preparation for PSLE
- Programmes planned to support students holistically in preparation of PSLE

## Support for child's well-being & academic learning

- Remediation Programmes
- Department strategies to support students with different readiness levels



# Supporting Your Child for Effective Stress Management



**Mr Muhammad Ismail, Special Educational Needs Officer**

**Mrs Han Pei Yuan, Senior School Counsellor**

*Every White Sandian, A Success Story*

# Agenda

1. Introduction of the Student Development Team
2. Establishing **good routines** for your child
  - Uses of **visual schedules**
3. Supporting your child's **emotional well-being**
  - How **stress affects performance**
  - How **parents can respond to the needs of your child**
4. Summary & resources



# Student Development Team



Mr Gary Peh

HOD Student  
Management



Ms Brenda Ng

HOD Special  
Educational  
Needs



Mr Wong

Upper Primary  
Year Head



Mr Asraf

Middle Primary  
Year Head  
(Internal)



Mdm Erica  
Cheah

Lower Primary  
Year Head



Mdm Yee

Senior Special  
Educational  
Needs Officer



Mdm Samirah

Special  
Educational  
Needs Officer



Mr Zuhri

Special  
Educational  
Needs Officer



Mr Ismail

Special  
Educational  
Needs Officer



Mrs Han

Senior School  
Counsellor



Ms Janice Tan


School  
Counsellor

*Every White Sandian, A Success Story*

# We hear you...

- Concerns on how to support your child to be better prepared for PSLE
- Concerns about P6 pupils' stress level



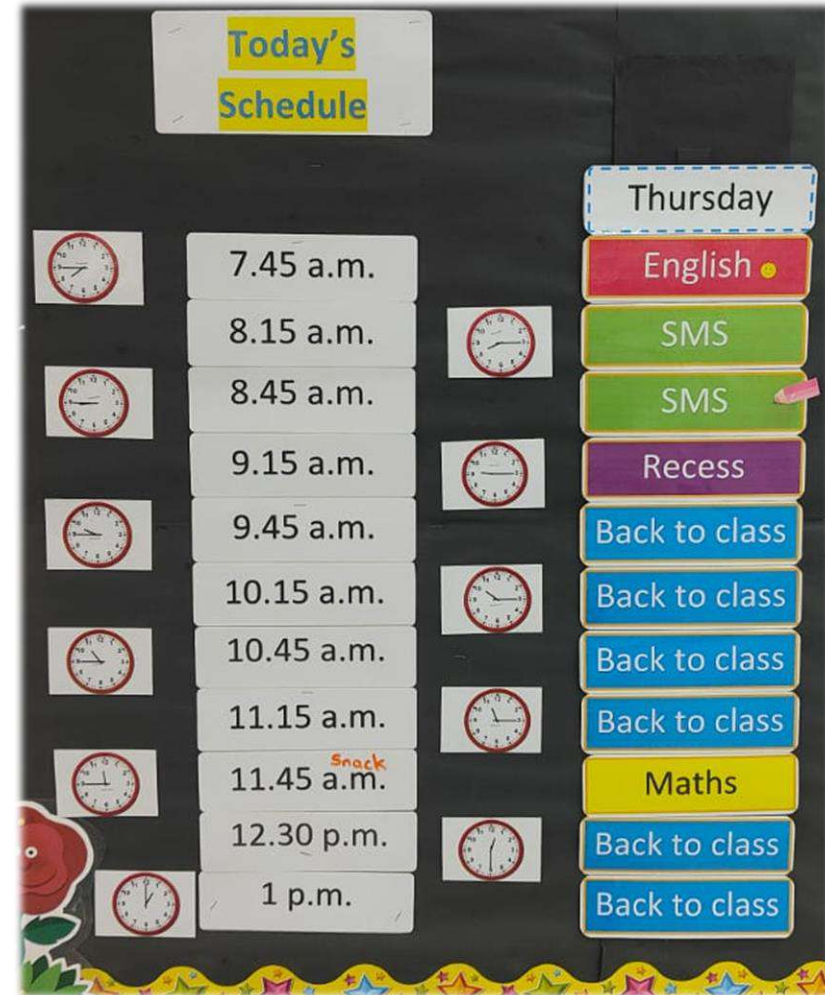


# Establishing good routines with your child



# How can you establish good routines with your child?

## Using Visual Schedules



# Evidence-based Practice on the use of Visual Schedules

Research shows that visual schedules are **helpful** for a **variety of children**. **Visual cues** such as a schedule or a routine is a **helpful source of consistency** that can help **children** to be more **successful** in **everyday activities** and in **independent learning**.

Visual schedules: A practical guide for families - university of Utah. (n.d.). [https://ed-psych.utah.edu/school-psych/\\_resources/documents/grants/autism-training-grant/Visual-Schedules-Practical-Guide-for-Families.pdf](https://ed-psych.utah.edu/school-psych/_resources/documents/grants/autism-training-grant/Visual-Schedules-Practical-Guide-for-Families.pdf)

# Example of Daily Schedule

Day / Time	13:30	14:00	14:30	15:00	15:30	16:00	16:30	17:00	17:30	18:00	18:30	19:00	19:30	20:00	20:30	21:00	21:30	22:00
Monday	School's Enrichment Program													Self Study				
Tuesday	School's Remedial													Self Study				
Wednesday			CCA											Self Study				
Thursday					Enrichment Class								Enrichment Class					
Friday					Enrichment Class							Football Training						



# Detailed Schedule

Day / Time	13:30	14:00	14:30	15:00	15:30	16:00	16:30	17:00	17:30	18:00	18:30	19:00	19:30	20:00	20:30	21:00	21:30	22:00	22:30
Monday	School's Enrichment Program				Journey Home		Wash up					Dinner		Self Study				Bedtime	
Tuesday	School's Remedial						Journey Home		Wash up				Dinner		Self Study				Bedtime
Wednesday			CCA			Journey Home		Wash up				Dinner		Self Study				Bedtime	
Thursday	Journey Home		Wash up		Enrichment Class				Dinner		Journey to enrichment		Enrichment Class		Journey Home		Wash up	Bedtime	
Friday	Journey Home		Wash up		Enrichment Class			Dinner		Journey to football training		Football Training		Journey Home		Wash up	Bedtime		

# How can you support your child in planning for a balanced schedule?

## Commentary: Parents, are your kids active or just overscheduled?

Parents are asked to help children stay physically fit, mentally challenged, spark their creativity but also carve space for family and rest. Here's how to consider the benefits and risks of extracurricular activities, say two University of Calgary psychologists.



Extracurricular activities are a great opportunity for children to develop but overscheduling them may leave kids prone to stress. (Photo, left to right: iStock/nirat, iStock/Galione)

Marissa Nivison

Sheri Madigan

07 Jan 2024 06:00AM



Nivison, M., & Madigan, S. (2024, January 7). Commentary: parents, are your kids active or just overscheduled? Channel News Asia . Retrieved January 31, 2024, from <https://www.channelnewsasia.com/commentary/children-class-art-music-sports-tuition-busy-active-4026936#:~:text=Overscheduling%20kids%20may%20get%20in,to%20demonstrate%20their%20own%20individuality>.

# Factors to consider when planning a balanced schedule

- Help your child to **understand the purpose** of schedule
- Determine how the **time is spent on each activity**
- **Downtime is equally important** for recharge
- **Positive affirmation** for their effort

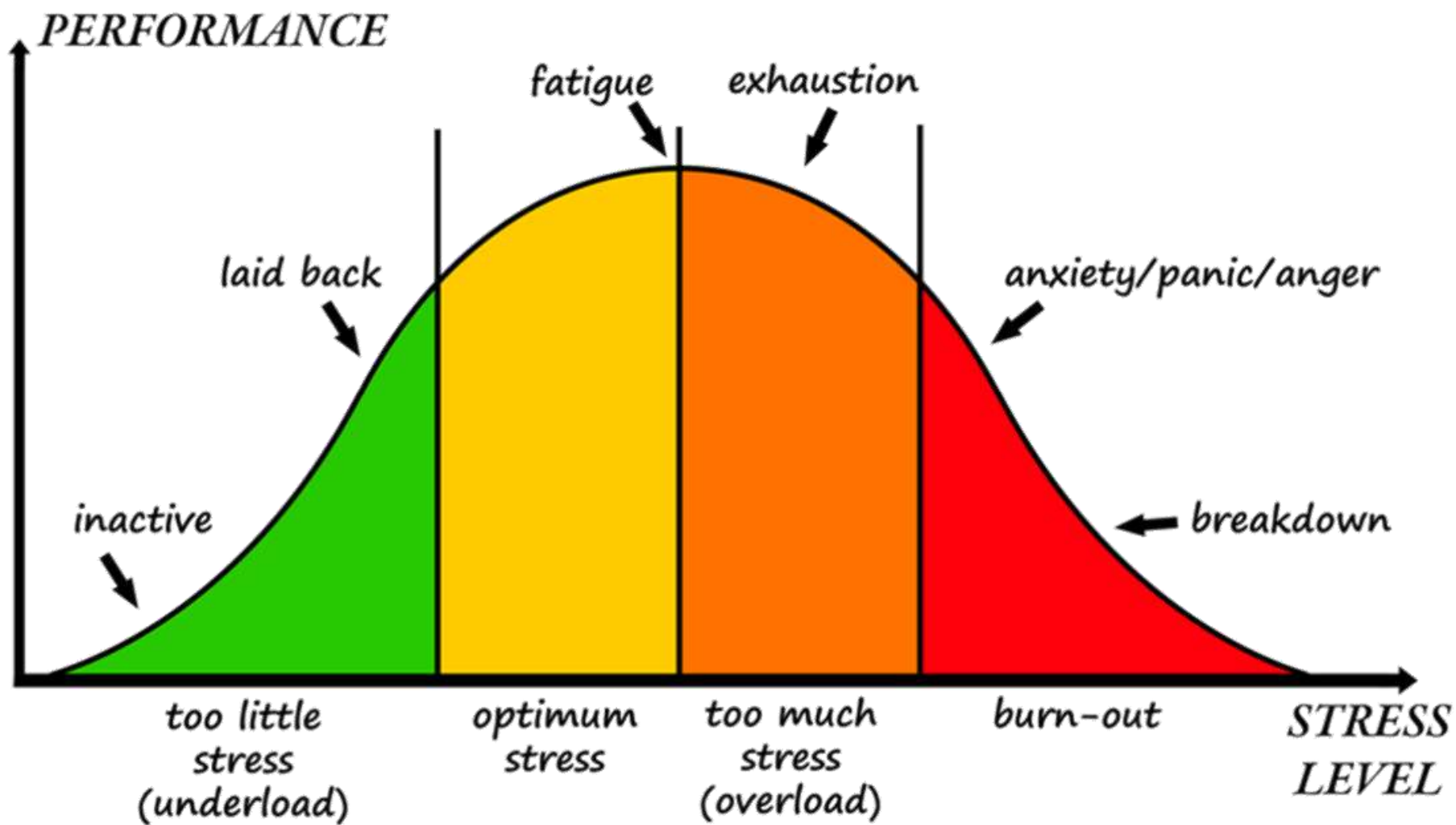




# Supporting your child's emotional well-being

What does your child need from  
you as a parent?

## STRESS CURVE



*Every White Sandian, A Success Story*



# Signs of Significant Stress

If your child shows a combinations of these signs, in extreme or sustained forms, it may be an indication that they are overwhelmed.

**Struggles to pay attention to studies or activities**

**Tiredness, loss of appetite and sleep**

**Rebellious streak**

**Excuses to miss school/class**

**Stays away from others**

**Sulkiness**

# What can I do if my child is experiencing extreme stress?



- Converse frequently with your child and discuss matters in an open and supportive manner



- Speak to your child's teacher about how they are coping in school and discuss how you can support them at home



- Assure your child that it is normal to feel nervous during the exam period



- Encourage your child to take regular short breaks after blocks of studying



- Ensure your child eats healthy food and has at least 9 hours of sleep every night



# What does your **child need** from you as a parent?



- |                 |             |
|-----------------|-------------|
| ✓ Support       | ✗ Criticism |
| ✓ Encouragement | ✗ Blame     |
| ✓ Trust         | ✗ Threaten  |
| ✓ Respect       | ✗ Nag       |

*Guiding question:*

Is what you are doing bringing you  
**closer to** or **further away** from  
your relationship with your child?

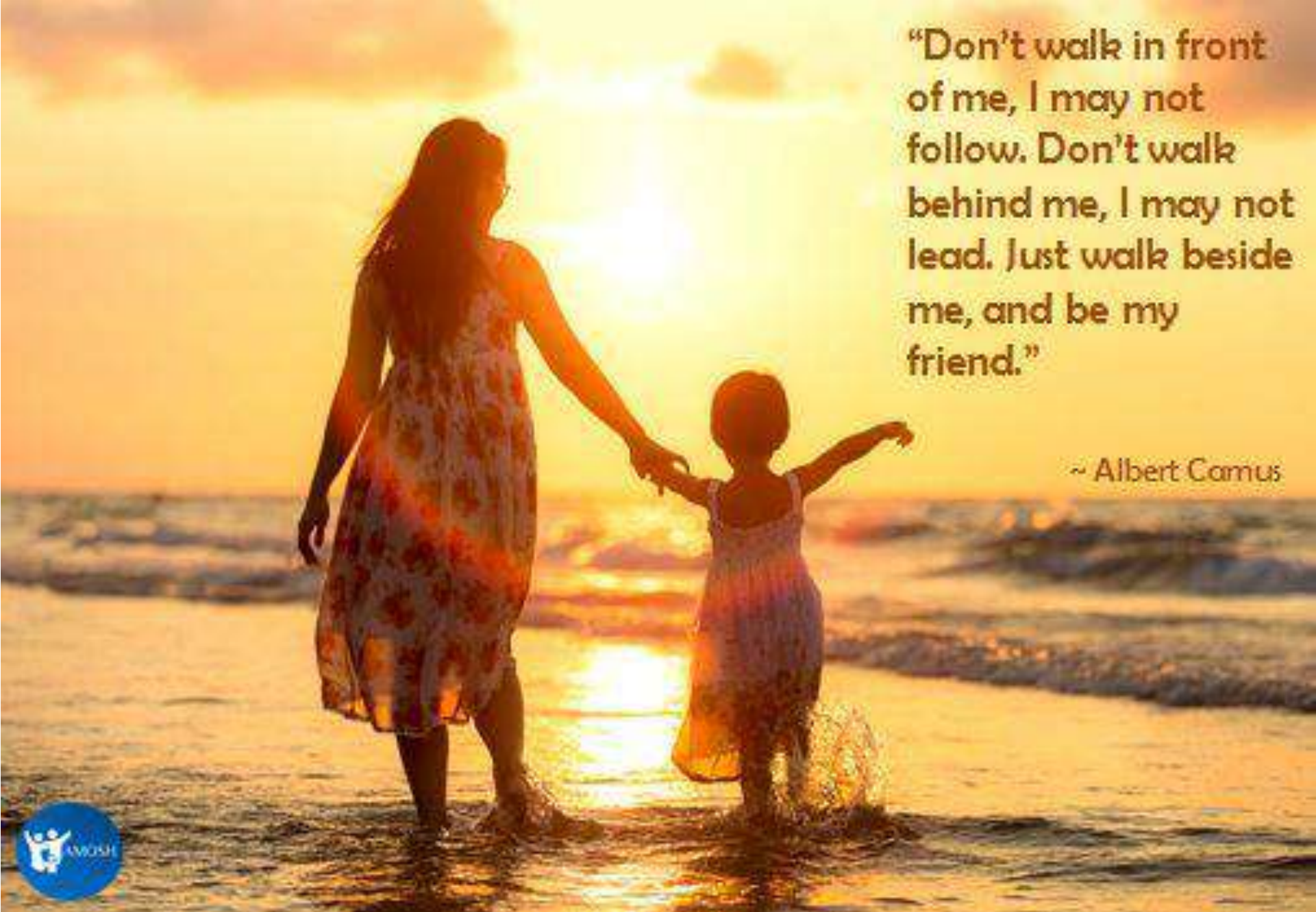
## Summary

- Establish good routines
- Stress affects the ability to perform
- Respond to meet the needs of your child

## Resource

- MOE Parent Kit  
[www.moe.gov.sg/parentkit](http://www.moe.gov.sg/parentkit)



A woman and a child are walking on a beach at sunset. The woman is on the left, wearing a floral dress, and the child is on the right, wearing a white dress. They are holding hands and walking towards the ocean. The sun is low on the horizon, creating a warm, golden glow. The child is splashing in the shallow water.

“Don’t walk in front of me, I may not follow. Don’t walk behind me, I may not lead. Just walk beside me, and be my friend.”

~ Albert Camus

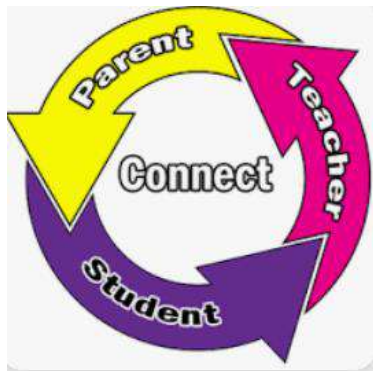


*Every White Sandian, A Success Story*





# White Sands TEAM



*Every White Sandian, a success story*

